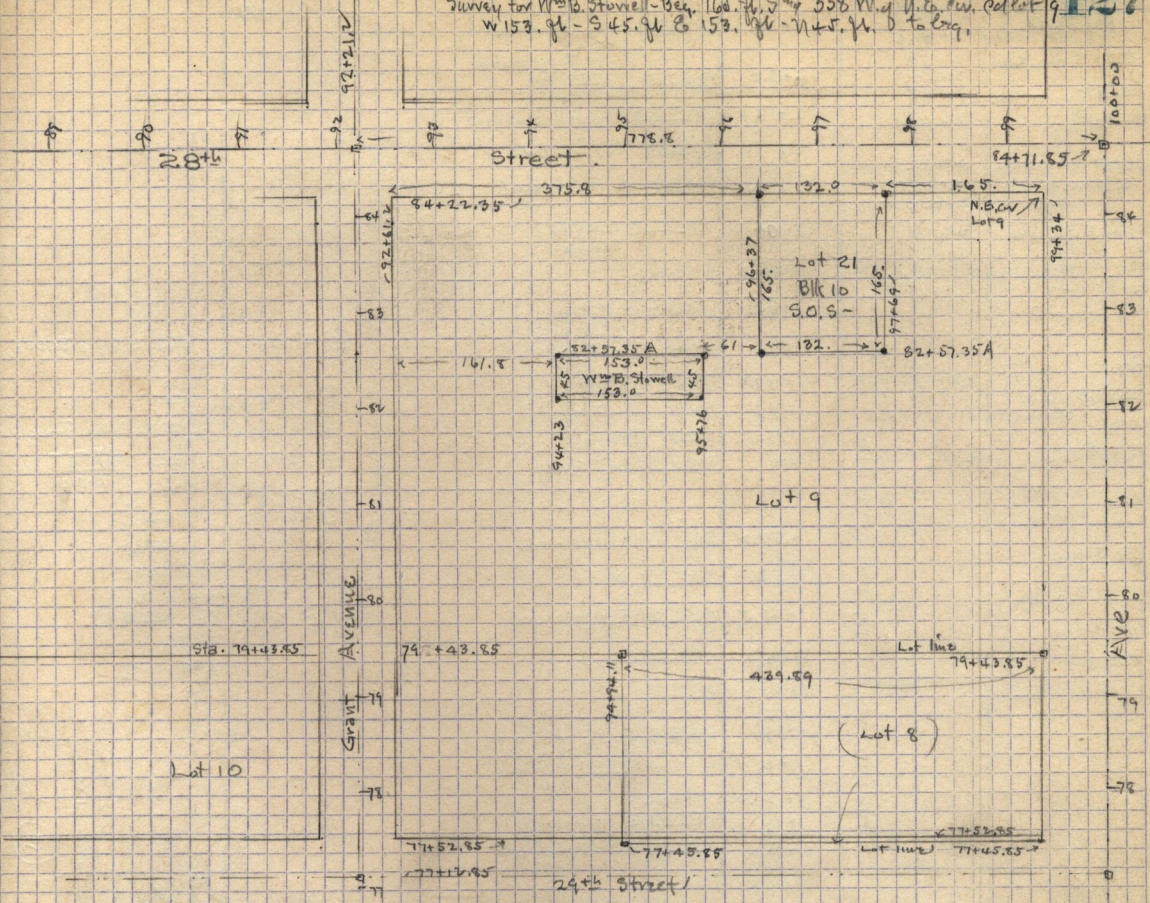


see also page 31

Part of Blk. 10 - South Ogden Survey

Survey for Wm B. Stowell - Beg. 166 ft. S. 358 W. of N.E. cor. of Lot 9
 W 153.0 ft. - S 45.0 ft. E 153.0 ft. - N 45.0 ft. to beg.

127



Details of above Survey by Stowell

